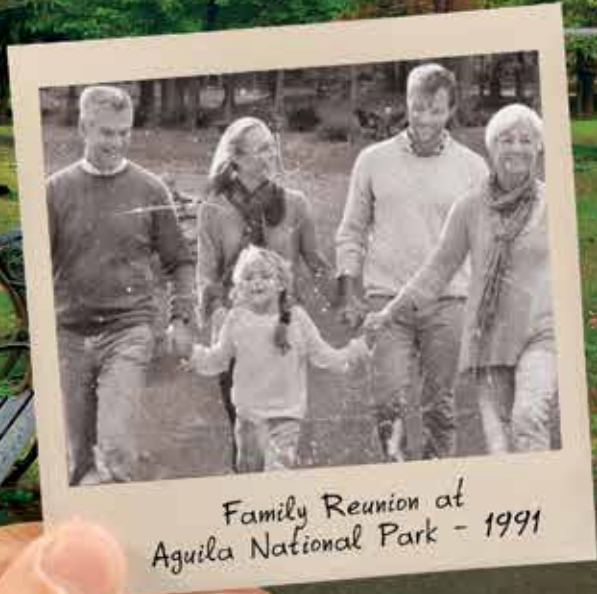




2019 EAGLE TRAVEL TRAILERS



Family Reunion at
Aguila National Park - 1991



2
YEAR
LIMITED
WARRANTY



284BHOK OUTSIDE KITCHEN

The new Eagle HT half-ton towable travel trailer series is available in 2 unique interior designs: MODERN FARMHOUSE, a fresh look inspired by residential trends, features Farmhouse White wood tones, custom hardware, countertops, and flooring, with retro lighting, rustic accents, and more. Shown here with optional fireplace.



284BHOK MAIN INTERIOR

284BHOK MAIN INTERIOR



EAGLE HT BEDROOM





324BHTS MAIN INTERIOR



Beautiful hand-glazed brown maple woodwork with chocolate accents and rustic flooring enhances Eagle's other new interior design, *American Tradition*. Optional LED fireplace and MORryde entry steps provide luxury features on shorter, lighter floorplans.



284BHOK BATHROOM

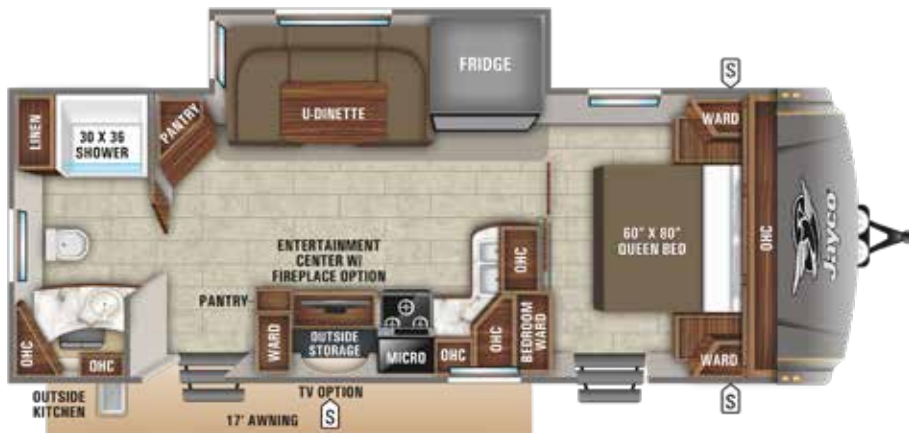


324BHTS KITCHEN



MORRYDE STEPABOVE®

EAGLE HT TRAVEL TRAILER FLOORPLANS



262RBOK OPTION: E



272RBOK OPTIONS: A, B, F



264BHOK OPTION: E



280RSOK OPTIONS: A, D



270RLDS OPTIONS: A, C



284BHOK OPTIONS: A, B, F

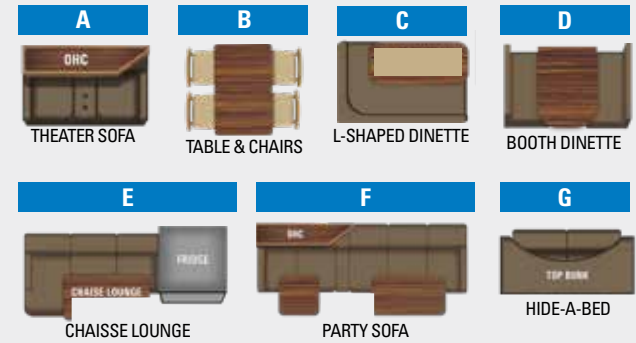


324BHTS OPTIONS: A, B, F, G

LEGEND

- STORAGE
- TRAILER HITCH
- LAV BATHROOM SINK
- MED MEDICINE CABINET
- MICRO MICROWAVE
- OHC OVERHEAD CABINETS
- FRIDGE REFRIGERATOR
- WARD WARDROBE

OPTIONS



EAGLE HT TRAVEL TRAILER SPECS

FLOORPLAN	EXTERIOR TRAVEL LENGTH	EXTERIOR WIDTH	EXTERIOR HEIGHT (WITH A/C)	INTERIOR HEIGHT	UNLOADED VEHICLE WEIGHT	DRY HITCH WEIGHT	GROSS VEHICLE WEIGHT RATING	CARGO CARRYING CAPACITY	FRESH WATER CAPACITY (INCLUDES WATER HEATER)	GREY WASTE WATER CAPACITY*	BLACK WASTE WATER CAPACITY	SLEEP CAPACITY
262RBOK	30' 1"	8' 1"	11' 10"	7' 0"	7,090	675	9,995	2,905	49	65*	32.5	3 - 4
264BHOK	32' 10"	8' 1"	11' 10"	7' 0"	7,410	760	9,995	2,585	49	65*	32.5	7 - 8
270RLDS	33' 11"	8' 1"	11' 10"	7' 0"	7,800	990	9,995	2,195	49	65*	32.5	4
272RBOK	32' 6"	8' 1"	11' 9"	7' 0"	7,515	825	9,995	2,480	49	65*	32.5	5 - 6
280RSOK	35' 11"	8' 1"	11' 9"	7' 0"	8,465	1,130	9,995	1,530	81	65*	32.5	4 - 6
284BHOK	35' 3"	8' 1"	11' 9"	7' 0"	7,990	985	9,995	2,005	81	65*	32.5	8 - 10
324BHTS	38' 5"	8' 0"	11' 6"	7' 0"	8,605	930	10,950	2,345	81	65*	32.5	6 - 8

* Split tank

It is important for your safety and enjoyment that your tow vehicle be adequately sized and equipped to tow and handle the GVWR of the RV you select. Review weights and rating of your tow vehicle and consult a competent advisor for questions or advice. Whether you are new to RVing or a veteran, get a feel for the performance of your tow vehicle before heading out on the roadways. When you tow an RV, you must drive differently than when you drive a single vehicle. Practice hooking up, driving, backing up and braking in a safe environment or seek out professional instruction. Jayco affixes a weight label to each RV which lists weight information for that vehicle. See specifications chart above.

Unloaded Vehicle Weight (UVW): Sometimes referred to as "Dry Weight," UVW means the typical weight of this trailer as built at the factory; The UVW, as used in product literature and other promotional materials, does not include cargo, fresh water, propane, options or dealer-installed accessories.

Gross Vehicle Weight Rating (GVWR): GVWR means the maximum permissible weight of the trailer, including the UVW plus personal items, all cargo, fluids, options and dealer-installed accessories. The GVWR is equal to or greater than the sum of the UVW and the CCC.

Cargo Carrying Capacity (CCC): CCC means the maximum weight of personal items, food, fresh water, propane, tools, other cargo and dealer-installed accessories that can be carried by the trailer. CCC is equal to or less than GVWR minus UVW. The addition of options will decrease the CCC.

Hitch Weight (HW): The hitch weight, as used in product literature and other promotional materials, does not include cargo, fresh water, propane gas, options or dealer-installed accessories. The addition of these types of items will either add to or subtract from the stated hitch weight.



322RLOK OUTSIDE KITCHEN

Eagle's luxurious rear living with outside kitchen floor plan, featuring MODERN FARMHOUSE décor, mixes contemporary kitchen styling with highly usable, custom furniture for a warm and welcoming home away from home (optional 21 cu. ft. residential refrigerator and rolling island pantry shown).



322RLOK MAIN INTERIOR



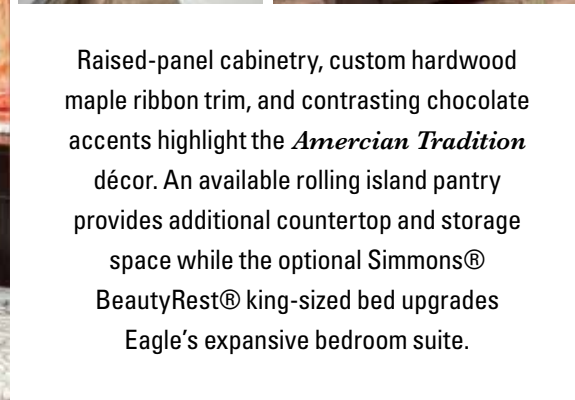
322RLOK MAIN INTERIOR



322RLOK KITCHEN



322RLOK MAIN INTERIOR
EAGLE BEDROOM

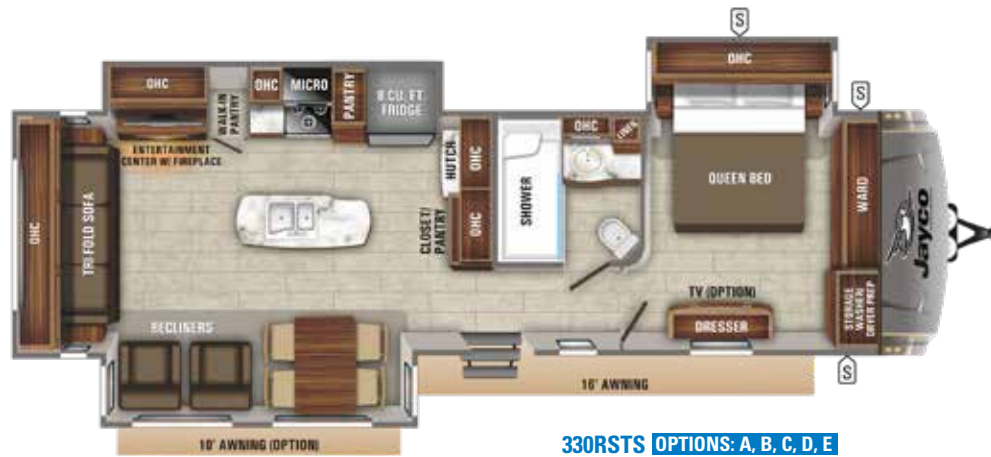


Raised-panel cabinetry, custom hardwood maple ribbon trim, and contrasting chocolate accents highlight the *Americian Tradition* décor. An available rolling island pantry provides additional countertop and storage space while the optional Simmons® BeautyRest® king-sized bed upgrades Eagle's expansive bedroom suite.



322RLOK MAIN INTERIOR

EAGLE TRAVEL TRAILER FLOORPLANS



LEGEND		OPTIONS		
[S]	STORAGE	A	B	C
[H]	TRAILER HITCH	[DINETTE]	[SECOND TRI-FOLD SOFA OPTION]	[KING BED]
LAV	BATHROOM SINK			
MED	MEDICINE CABINET			
MICRO	MICROWAVE			
OHC	OVERHEAD CABINETS	D	E	
FRIDGE	REFRIGERATOR	[OPTION]	[13 CU. FT. FRIDGE]	
WARD	WARDROBE			

EAGLE TRAVEL TRAILER SPECS

FLOORPLAN	EXTERIOR TRAVEL LENGTH	EXTERIOR WIDTH	EXTERIOR HEIGHT (WITH A/C)	INTERIOR HEIGHT	UNLOADED VEHICLE WEIGHT	DRY HITCH WEIGHT	GROSS VEHICLE WEIGHT RATING	CARGO CARRYING CAPACITY	FRESH WATER CAPACITY (INCLUDES WATER HEATER)	GREY WASTE WATER CAPACITY*	BLACK WASTE WATER CAPACITY	SLEEP CAPACITY
322RLOK	38' 7"	8' 0"	11' 10"	7' 3"	9,575	1,230	11,750	2,175	81	97.5	32.5	4
330RSTS	39' 4"	8' 0"	12' 0"	7' 3"	9,780	1,395	11,750	1,920	81	97.5	32.5	4 - 6
338RETS	39' 4"	8' 0"	12' 0"	7' 3"	9,645	1,350	11,700	2,055	81	97.5	32.5	4 - 8

* split tank

It is important for your safety and enjoyment that your tow vehicle be adequately sized and equipped to tow and handle the GVWR of the RV you select. Review weights and rating of your tow vehicle and consult a competent advisor for questions or advice. Whether you are new to RVing or a veteran, get a feel for the performance of your tow vehicle before heading out on the roadways. When you tow an RV, you must drive differently than when you drive a single vehicle. Practice hooking up, driving, backing up and braking in a safe environment or seek out professional instruction. Jayco affixes a weight label to each RV which lists weight information for that vehicle. See specifications chart above.

Unloaded Vehicle Weight (UVW): Sometimes referred to as "Dry Weight," UVW means the typical weight of this trailer as built at the factory; The UVW, as used in product literature and other promotional materials, does not include cargo, fresh water, propane, options or dealer-installed accessories.

Gross Vehicle Weight Rating (GVWR): GVWR means the maximum permissible weight of the trailer, including the UVW plus personal items, all cargo, fluids, options and dealer-installed accessories. The GVWR is equal to or greater than the sum of the UVW and the CCC.

Cargo Carrying Capacity (CCC): CCC means the maximum weight of personal items, food, fresh water, propane, tools, other cargo and dealer-installed accessories that can be carried by the trailer. CCC is equal to or less than GVWR minus UVW. The addition of options will decrease the CCC.

Hitch Weight (HW): The hitch weight, as used in product literature and other promotional materials, does not include cargo, fresh water, propane gas, options or dealer-installed accessories. The addition of these types of items will either add to or subtract from the stated hitch weight.

Travel Trailers Built Like Fifth Wheels

Based on customer demands for a “flat-floored fifth wheel” build, Eagle travel trailers share the following:

- 4-Star Handling Package
- 2” Accessory Receiver
- Shared Slide-Room Heights
- Shared Floorplans
- Taller Ceiling Heights
- Larger Tank Capacities
- Larger Pass-Through Storage
- Full Fiberglass Front Caps
- Upgraded Running Gear
- Luxury Options



Two Unique & Beautiful Concepts

True interior design. More choice. Mindful craftsmanship.

Every fixture, fabric and feature has been carefully selected and expertly installed. The result is an aesthetic that’s extraordinary — with Jayco’s famous high level of livability. Designer-selected patterns and fabrics enhance the overall look and feel, while unique furniture designs and contrasting hand-picked hardware and lighting enhance each exclusive decor package.



Led by Interior Designer Stacy Stewart, our design, product development and engineering teams set out to answer the call for more choice in RV interiors and developed a market-disrupting design concept that could be expertly crafted without hampering production.



SCAN TO LEARN MORE ABOUT EAGLE'S INTERIOR DESIGN

Furniture		American Tradition		MODERN FARMHOUSE		Furniture	
	Window Treatment Trim Accent Main						Cabinetry Fascia
Cabinetry						Cabinetry	
Fascia						Fascia	

STANDARDS & OPTIONS

Eagle HT
Eagle

Customer Value Package (Mandatory)	Eagle HT	Eagle
Goodyear® Endurance® Tires (Made in U.S.A. I Load Range 'E')	CVP	CVP
Dexter® Axles with Nev-R-Adjust® brakes and E-Z Lube® hubs	CVP	CVP
MORryde® CRE-3000™ rubberized suspension	CVP	CVP
15,000 BTU "Whisper Quiet" A/C	CVP	CVP
Quick recovery gas/electric DSI water heater (17.8 gallon per hour)	CVP	CVP
Residential Queen (60 inch x 80 inch) Simmons® mattress with under-bed storage	CVP	CVP
Electric patio awning with integrated LED lights	CVP	CVP
Custom machined aluminum rims	CVP	CVP
Rear 2 inch receiver	CVP	CVP
LED HDTV with fully digital HDMI output	40"	50"
12V AM/FM/CD/DVD/USB A/V system with Bluetooth® and HDMI®	CVP	CVP
Stainless steel range with glass cover	CVP	CVP
Stainless steel microwave with exhaust fan	CVP	CVP
Hidden hinges	CVP	CVP
Rain-proof EZ Breeze™ 350CFM bathroom power vent (patent pending, a class exclusive)	CVP	CVP
Rooftop and ground solar prep by Go Power® (an industry first!)	CVP	CVP
Upgraded friction hinge entrance door with XL grab handle	CVP	CVP
Wireless remote control system	CVP	CVP
Keyed Alike™ lock system	CVP	CVP
Backup camera prep (rear observation)	CVP	CVP
Bluetooth speaker prep	CVP	CVP

Luxury Package (Mandatory)	Eagle HT	Eagle
Soft close residential kitchen drawers	N/A	LUX PKG
Integrated sound bar	N/A	LUX PKG
Washer/Dryer prep (STD select HT models)	N/A	LUX PKG
LG® solid-surface kitchen countertop with bamboo sink cover and strainer	OPT	LUX PKG
50 amp service with dual A/C ducts and second A/C prep	OPT	LUX PKG
Frameless windows	OPT	LUX PKG
LED fireplace with 5,000 BTU electric space heater	OPT	LUX PKG

Standard Exterior Equipment	Eagle HT	Eagle
4-Star Handling Package: • Dexter Axles with Nev-R-Adjust brakes and E-Z Lube hubs • Wet bolt fasteners and bronze bushings • Upgraded MORryde suspension • Upgraded Goodyear tires	•	•
HELIX Cooling System™ (industry exclusive): • Exterior-mounted 15,000 BTU "Whisper Quiet" A/C unit • Jayco exclusive insulated duct design • Directional and closeable A/C vents • Larger return air vents with user accessible filters	•	•
I-class cambered, structural steel I-beam frame	•	•
StrongholdVBL™ aluminum framed and vacuum bond laminated gel-coated fiberglass exterior walls (including rear wall and slide room end walls)	•	•
Magnum Truss™ Roof System (strongest tested roof in the industry) with one piece, seamless DiFlex II material	•	•
JaySMART™ (Safety Markers And Reverse Travel) LED Lighting (patent-pending)	•	•

Eagle HT
Eagle

High gloss, fiberglass front cap with built-in specialty LED lighting	•	•
LED exterior lighting package	•	•
Custom automotive-grade vinyl exterior graphics package	•	•
Power service with detachable Powersmart™ LED shore power cord	30AMP	50AMP
Dual 30 lb. propane bottles with auto regulator	•	•
Sturdy, anti-slip aluminum entrance steps (Made in U.S.A.!) with blue LED light	•	•
Pass-through storage with Slam-latch™ baggage doors	•	•
Digital TV antenna	•	•
Exterior marine-grade speakers	•	•
Fully enclosed, LED lit universal docking center with quick connect outside shower, city water connection, and black tank flush	•	•
Independent satellite and whole coach cable hookups	•	•
Battery disconnect	•	•
Water heater bypass	•	•
Under-mounted spare tire	•	•
LP quick connect (outside grill prep)	•	•
Roof ladder	•	•
"Industry's BEST" outside kitchen (select models)	•	•
Front electric tongue jack	•	•
Front electric stabilizer jacks	OPT	•
Rear electric stabilizer jacks	OPT	•

Standard Interior Equipment	Eagle HT	Eagle
Solid hardwood slide fascia	•	•
Handcrafted and glazed doors, drawers and trim	•	•
Heavy-duty, 75 lb., full extension, steel ball-bearing drawer guides	•	•
5/8 inch tongue and groove joined plywood floor decking	•	•
Shaw® residential carpeting with R2X® stain guard	•	•
Shaw residential carpet pad with R-value and sound dampening	•	•
"Wood Plank" vinyl flooring (standard minimal carpeting)	•	•
LED interior lighting throughout	•	•
LED dimmer switches in main room and dining area	•	•
Central command center with built-in tank monitoring	•	•
Tri-fold hide-a-bed sofa with residential sleep surface (select models)	•	•
Swivel glider recliners (select models)	•	•
Stainless steel kitchen sink	•	•
Brushed nickel kitchen faucet with pullout sprayer	•	•
8 cu. ft. gas/electric refrigerator with freezer	•	•
Dual USB charging ports (kitchen and bedroom)	•	•
12V charging station	•	•
Extra 110V power outlets in kitchen and slide rooms	•	•
Bathroom skylight	•	•
LED backlit medicine cabinet with custom framed mirror (industry exclusive)	•	•
Bathroom stone and glass tile backsplash	•	•
Blue LED nightlights (bathrooms and bunkrooms)	•	•
Porcelain foot flush toilet	•	•

Eagle HT
Eagle

Residential quilted bedspread and pillows	•	•
Smart LED Reading Lights (with blue nightlight mode)	•	•
CPAP prepped bedroom	•	•
Carbon monoxide and LP detector	•	•
Options		
Canadian Standards	OPT	OPT
Custom contemporary or traditional interior design (Industry First!)	OPT	OPT
16" Goodyear Endurance Tire Upgrade	OPT	STD
Freestanding Rustic Table with Leaf and 2 Storage & 2 Folding Chairs	OPT	OPT
Booth Dinette (select models)	OPT	OPT
L-Shaped Booth Dinette (270RLDS)	OPT	N/A
Chaise Lounge Dinette (262RBOK & 264BHOK)	OPT	N/A
Party Sofa with Stowable Tables and Hide-a-bed (select models)	OPT	N/A
LED fireplace, 5,000 BTU electric heater (requires 50 amp service)	OPT	LUX PKG
Wall hugger theater seating (select models, STD on 322RLOK)	OPT	OPT
2nd Tri-fold Hide-A-Bed Sofa (select models)	OPT	OPT
LG HI-MACS® solid-surface kitchen countertops	OPT	LUX PKG
Rear electric stabilizer jacks	OPT	STD
MORryde StepAbove entrance steps (STD select models)	OPT	OPT
Electric auto-leveling system (in place of rear electric jacks)	OPT	OPT
King-sized SIMMONS® BeautyRest® mattress	OPT	OPT
13 cu. ft. Gas/Electric Refrigerator	N/A	OPT
23 cu. ft. Residential Refrigerator + 1200W pure sine wave inverter	N/A	OPT
2nd Power Awning	N/A	OPT
32 inch LED TV in Master Bedroom	N/A	OPT
32 inch LED TV in Bunk House (select models)	OPT	N/A
32 inch LED TV in Outside Kitchen (select models)	OPT	OPT
Rolling island pantry (322RLOK, 338RETS)	N/A	OPT
Wireless Backup/Review Camera kit	OPT	OPT
Sani-con® Turbo waste management system	OPT	OPT
Frameless windows	OPT	LUX PKG
Frameless Dual Pane Tinted Safety Glass Windows	OPT	OPT
Generator Prep	OPT	N/A

CVP - Customer Value Package **N/A** - Not Available **STD** - Standard

OPT - Optional • - Standard

LUX PKG - Luxury Package



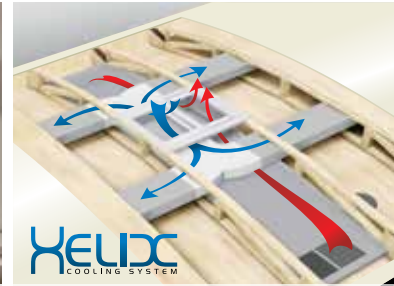
KEYED-ALIKE LOCK SYSTEM



HARDWOOD SLIDE ROOM FASCIA



INDUSTRY EXCLUSIVE LED BACKLIT MIRROR



HELIX WHISPER QUIET COOLING SYSTEM WITH JAYCO-EXCLUSIVE DUCT DESIGN



LG SOLID-SURFACE KITCHEN COUNTERTOP WITH BAMBOO SINK COVER AND STRAINER



MORRYDE CRE3000 RUBBERIZED SUSPENSION



RESIDENTIAL SIMMONS MATTRESS



360 SIPHON ROOF VENT



SHAW RESIDENTIAL CARPETING WITH R2X STAIN GUARD, R-VALUE AND SOUND DAMPENING



POTS AND PANS DRAWER WITH 75 LB. CAPACITY



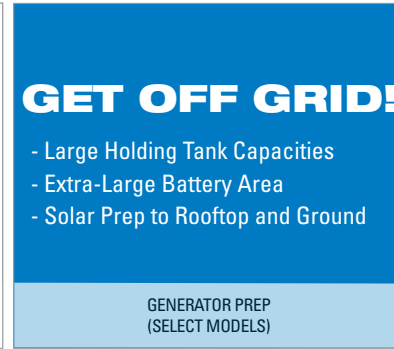
12V 3-ZONE FURRION® AV SYSTEM WITH HDMI AND BLUETOOTH



INTEGRATED REAR 2-INCH RECEIVER HITCH



OPTIONAL AUTO-LEVELING UPGRADE FEATURES WI-FI REMOTE CONTROL VIA APP



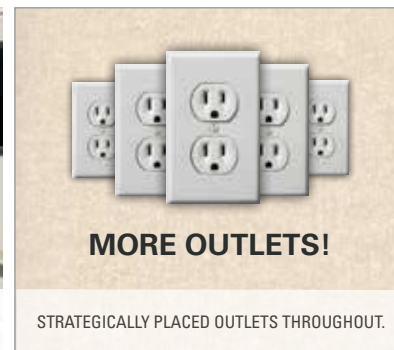
OPTIONAL FURRION BACKUP CAMERA SYSTEM



OPTIONAL SANI-CON TURBO WASTE MANAGEMENT SYSTEM



FRAMELESS WINDOWS (OPTIONAL ON HT)



MORE OUTLETS!
STRATEGICALLY PLACED OUTLETS THROUGHOUT.



MORRYDE STEPABOVE (OPTIONAL, STD ON SELECT MODELS)

1 4 STAR HANDLING PACKAGE

- ★ **DEXTER AXLES WITH NEV-R-ADJUST BRAKES**
The Benchmark of the trailer industry!
- ★ **DEXTER WET BOLT FASTENERS AND BRONZE BUSHINGS**
Resists the wear-and-tear of towing.
- ★ **MORRYDE RUBBERIZED SUSPENSION SYSTEM**
Better absorbs and isolates road shock.
- ★ **GOODYEAR ENDURANCE TIRES**
Made in the U.S.A. and featuring the patented Durawall® technology.



* Jayco's Eagle Travel Trailer construction mirrors Eagle Fifth Wheel construction!

2 STRONGHOLD VBL

Eagle flaunts the industry's strongest vacuum-bonded lamination. We laminate each sidewall, rear wall, slide room wall, and slide room end walls for 16 minutes at 144 tons of pressure.

3 HELIX Whisper Quiet Cooling System: standard 15,000 BTU AC with specialty ducts dramatically reduces noise while increasing efficiency

4 BETTER BUILDING MATERIALS: Tongue and groove joined plywood is used to deck both the roof and the floor

5 Jay SMART
Safety Markers And Reverse Travel
Jayco's exclusive, patent-pending S.M.A.R.T. lighting increases safety and visibility

6 MAGNUM ROOF SYSTEM

JAYCO'S ROOF **VS** OTHER ROOFS
4,500 POUNDS
ON A JAYCO ROOF VS. OTHER ROOFS

50% Stronger!



CLIMATESHIELD

7

Extend your camping season with the Jayco Climate Shield.

It protects against extreme heat and extreme freezing—even in temperatures as high as 100 degrees or as low as zero degrees (Fahrenheit).*

LIVING ROOM

0°F 70°F
100°F 69°F

KITCHEN

0°F 69°F
100°F 70°F

BATHROOM

0°F 71°F
100°F 68°F

HOLDING TANK

0°F 60°F
100°F 72°F

BEDROOM

0°F 71°F
100°F 71°F

*Jayco tested fifth wheels in zero degrees F and 100 degrees F weather over an extended period of time in a controlled environment, and all functions of the coach were fully operational. Testing was done in a completely controlled environment; therefore, temperatures during testing may not represent actual temperatures in nature and cannot account for elements such as wind or moisture. In actual use, unit may not perform as well. Supplier of cooling components does not guarantee anything better than 20 degrees difference from ambient temperature. In addition, outside components are subject to freezing and require steps to properly insulate. Jayco's limited warranty does not cover damage caused by freezing. To learn more about Climate Shield and testing done by Jayco, visit www.jayco.com.



Meet your Jayco Dealer _____

Travel with Confidence _____

Follow Jayco
#Jayco50



Jayco, Inc. | P.O. Box 460 | Middlebury, IN 46540 RVIA

See dealer for further information and prices. All information in this brochure and on www.jayco.com is the latest available at the time of publication approval. Jayco reserves the right to make changes and to discontinue models without notice or obligation. Photography may show optional equipment or props used for decoration purposes only. RVs built for sale in Canada may differ to conform to Canadian codes. JAYCO and the JAYCO BIRD IN FLIGHT are registered trademarks of Jayco, Inc. Printed in USA 40K RB 7/18 © 2018 Jayco, Inc. 274880



At Jayco, we build our RVs to handle every adventure, then back them with our industry-leading 2-year limited warranty. We, with support from our select partners, have you covered for **2 camping seasons**. That's **730 days**. You won't find a better warranty in the business, because the only strings we attach are those that deliver the ultimate in reliability. That's the Jayco difference. So go explore. For a copy of our 2-year limited warranty with complete terms and conditions, please contact your local Jayco dealer.